

RESOLUTION NO. 94-188

RESOLUTION STATING THE INTENT TO AND ORDERING THE FORMATION OF A DISTRICT TO LEVY AND COLLECT ASSESSMENTS FOR MAINTENANCE OF WETLANDS PURSUANT TO THE LANDSCAPING AND LIGHTING ACT OF 1972 WITHIN A PORTION OF THE NORTHEAST ROSEVILLE SPECIFIC PLAN AREA TO BE KNOWN AS THE "NORTHEAST WETLANDS LANDSCAPING AND LIGHTING DISTRICT" AND WAIVING THE REQUIREMENT FOR NOTICE, HEARING AND AN ENGINEER'S REPORT

WHEREAS, the City of Roseville desires to establish a landscaping and lighting district to maintain wetlands located in the Northeast Roseville Specific Plan Area; and

WHEREAS, the City of Roseville has approved a number of tentative subdivision maps within the Northeast Roseville Specific Plan Area; and

WHEREAS, as a condition of such subdivision maps the property owners of the property proposed for inclusion in the district as shown in Exhibit "E", have waived any objections to the formation of the district, have waived notice, public hearing and an engineer's report for the formation of the district, and have waived any objection to assessments imposed pursuant to the district not in excess of those assessments specified in, and have agreed to bear all costs of district formation;

WHEREAS, the owners of the parcels as shown on Exhibit "E" have requested the creation of a landscaping and lighting district for the purpose of levying and collecting an annual assessment of the mitigation monitoring and maintenance costs arising out of compliance with the Section 404 Nationwide 26 Permit Authorization for a portion of the Northeast Roseville Specific Plan.

NOW, THEREFORE, THE COUNCIL OF THE CITY OF ROSEVILLE DOES RESOLVE AS FOLLOWS:

Section 1. The City Council hereby declares its intent to order the formation of a district within a portion of the Northeast Roseville Specific Plan Area and to levy and collect assessments within the district pursuant to the Landscaping and Lighting Act of 1972.

Section 2. The district shall be known and is hereby designated as the "Northeast Wetlands Landscaping and Lighting District" ("the District").

The boundaries of the District are more particularly described on Exhibits "F" and "G" attached hereto and by this reference incorporated herein.

Section 3. The purpose of the District is to levy and collect annual assessments for the maintenance of certain wetlands as more particularly described in the attached exhibits.

Section 4. Pursuant to section 22608.1 of the Streets and Highway Code, the City Council hereby orders the properties described above formed into a Landscape and Lighting Assessment District to be known as the "Northeast Wetlands Landscaping and Lighting District", without notice, hearing, and the filing of an engineer's report. The District shall be comprised of the property described above and shall maintain the properties and improvements described above. The District shall include all of the properties shown and more particularly described on Exhibits "F" and "G" attached hereto.

PASSED AND ADOPTED this 30th day of June, 1994, by the following roll call vote:

AYES COUNCILMEMBERS: Harry Crabb, Jr., Claudia Gamar, Pauline Roccucci,
Bill Santucci, Mel Hamel

NOES COUNCILMEMBERS: None

ABSENT COUNCILMEMBERS: None



MAYOR

ATTEST:



City Clerk

EXHIBIT E

NORTHEAST ROSEVILLE WETLANDS LANDSCAPING AND LIGHTING DISTRICT

SPECIFIC PLAN PARCELS AND PARCEL OWNERS

FOR 94/95 TAX YEAR

<u>SPECIFIC PLAN PARCEL NO.</u>	<u>ASSESSOR PARCEL NO.</u>	<u>AMOUNT</u>	<u>PARCEL OWNER</u>
5	015-450-005	1,018.00	OLYMPUS POINTE ONE & FIVE INV. C/O LEXINGTON HOMES 7700 COLLEGE TOWN DR., #118 SACRAMENTO, CA 95826
17	015-450-014	320.00	JOHNSON RANCH JOINT VENTURE 7700 COLLEGE TOWN DR., SUITE 101 SACRAMENTO, CA 95826
17	015-450-015	269.00	JOHNSON RANCH JOINT VENTURE 7700 COLLEGE TOWN DR., SUITE 101 SACRAMENTO, CA 95826
16	015-450-024	1,858.00	AKT DEVELOPMENT CORP 7700 COLLEGE TOWN DR #101 SACRAMENTO, CA 95826
17	015-450-030	300.00	JOHNSON RANCH JOINT VENTURE 7700 COLLEGE TOWN DR., SUITE 101 SACRAMENTO, CA 95826
17	015-450-031	554.00	JOHNSON RANCH JOINT VENTURE 7700 COLLEGE TOWN DR., SUITE 101 SACRAMENTO, CA 95826
17	015-450-032	706.00	JOHNSON RANCH JOINT VENTURE 7700 COLLEGE TOWN DR., SUITE 101 SACRAMENTO, CA 95826
17	015-450-033	2,190.00	JOHNSON RANCH JOINT VENTURE 7700 COLLEGE TOWN DR., SUITE 101 SACRAMENTO, CA 95826
9	048-010-030	36,517.00	KAISER FOUNDATION HOSPITALS C/O INSURANCE & TAXES P.O. BOX 12916 OAKLAND, CA 94604
7	048-010-039	1,007.00	O K & B PARTNERSHIP ET AL C/O FIVE STAR INVESTMENTS 8625 ELDER CREEK RD. SACRAMENTO, CA 95828
7	048-020-069	1,601.00	O K & B PARTNERSHIP ET AL C/O FIVE STAR INVESTMENTS 8625 ELDER CREEK RD. SACRAMENTO, CA 95828
3	048-020-070	1,491.00	O K & B PARTNERSHIP ET AL C/O FIVE STAR INVESTMENTS 8625 ELDER CREEK RD. SACRAMENTO, CA 95828

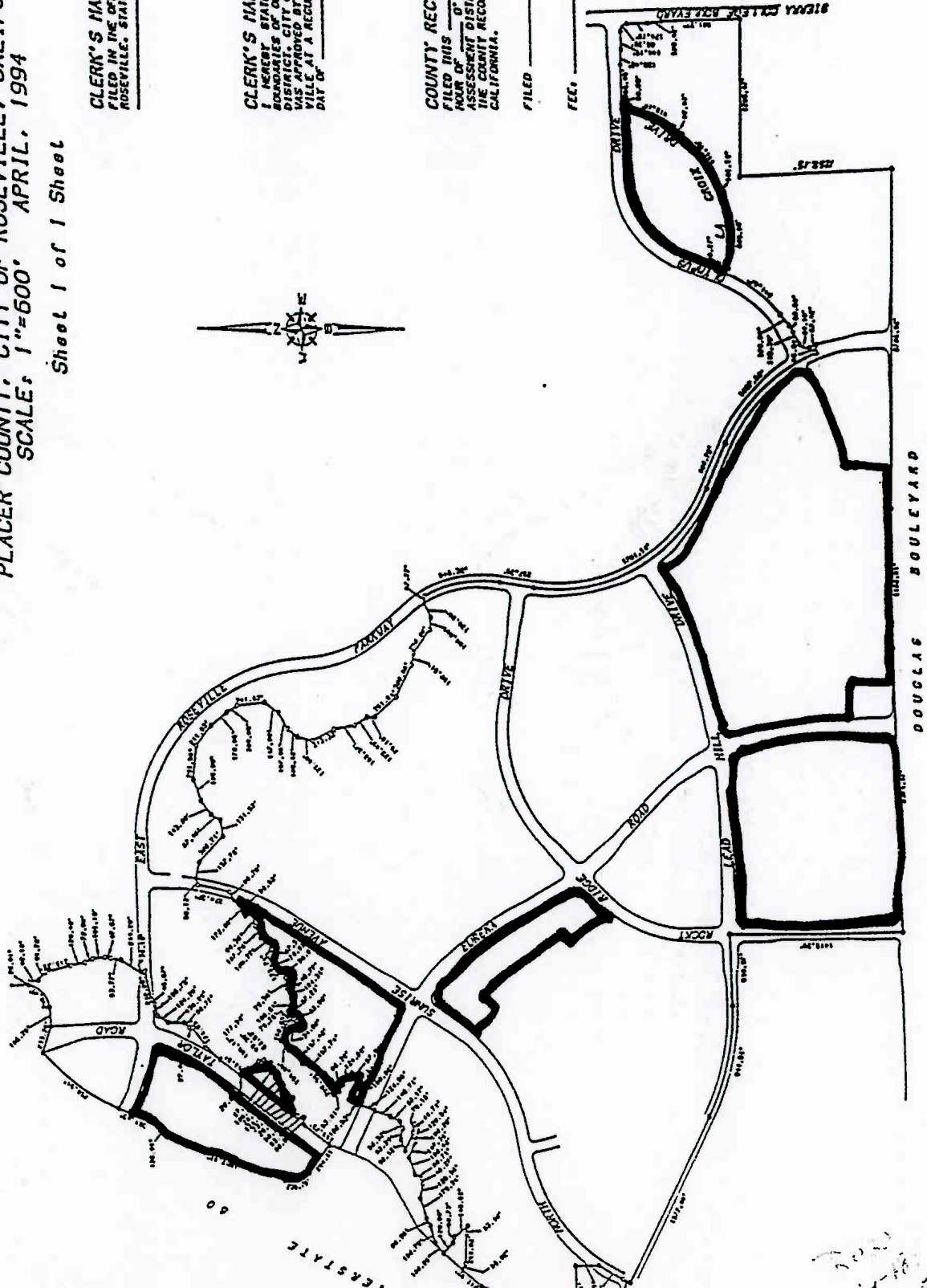
EXHIBIT E

13	048-450-021	845.00	JOHNSON RANCH DEVELOPERS 8615 ELDER CREEK RD., STE. 100 SACRAMENTO, CA 95828
13	048-450-022	215.00	JOHNSON RANCH DEVELOPERS 8615 ELDER CREEK RD., STE. 100 SACRAMENTO, CA 95828
1	PARCEL 1C	22,746.00	PER MEMO DATED 4/15/92, TAX TO BE PAID BY: JOHNSON RANCH JOINT VENTURE 7700 COLLEGE TOWN DR., SUITE 101 SACRAMENTO, CA 95826
1	PARCEL 1D	<u>13,080.00</u>	PER MEMO DATED 4/15/92, TAX TO BE PAID BY: JOHNSON RANCH JOINT VENTURE 7700 COLLEGE TOWN DR., SUITE 101 SACRAMENTO, CA 95826
	TOTAL 94/95 TAXES	<u>84,717.00</u>	

PROPOSED BOUNDARIES OF

NORTHEAST WETLANDS
LANDSCAPING AND LIGHTING DISTRICT
ASSESSMENT YEAR 1993-1994
PLACER COUNTY, CITY OF ROSEVILLE, CALIFORNIA
SCALE: 1"=600' APRIL, 1994

Sheet 1 of 1 Sheet



CLERK'S MAP FILING STATEMENT,
FILED IN THE OFFICE OF THE CITY CLERK OF THE CITY OF
ROSEVILLE, STATE OF CALIFORNIA, THIS _____ DAY OF
_____, 1994.

CITY CLERK OF THE
CITY OF ROSEVILLE

CLERK'S MAP STATEMENT,
I HEREBY STATE THAT THE MAP SHOWING PROPOSED
BOUNDARIES OF THE NORTHEAST WETLANDS LANDSCAPING AND LIGHTING
DISTRICT, CITY OF ROSEVILLE, PLACER COUNTY, CALIFORNIA,
WAS APPROVED BY THE CITY COUNCIL OF THE CITY OF ROSE-
VILLE AT A REGULAR MEETING THEREOF, HELD ON THE _____
DAY OF _____, 1994, BY ITS RESOLUTION NO. _____

CITY CLERK OF THE
CITY OF ROSEVILLE,
COUNTY OF PLACER

COUNTY RECORDER'S FILING STATEMENT,
FILED THIS _____ DAY OF _____, 1994, AT THE
HOUR OF _____ O'CLOCK _____ IN THE OFFICE OF
THE COUNTY RECORDER IN THE COUNTY OF PLACER, STATE OF
CALIFORNIA.

FILED _____ BY _____ DEPUTY
MART ANN HELLER, COUNTY
RECORDER, CALIFORNIA
PLACER, CALIFORNIA

PRELIMINARY

ASSESSMENT DIAGRAM OF

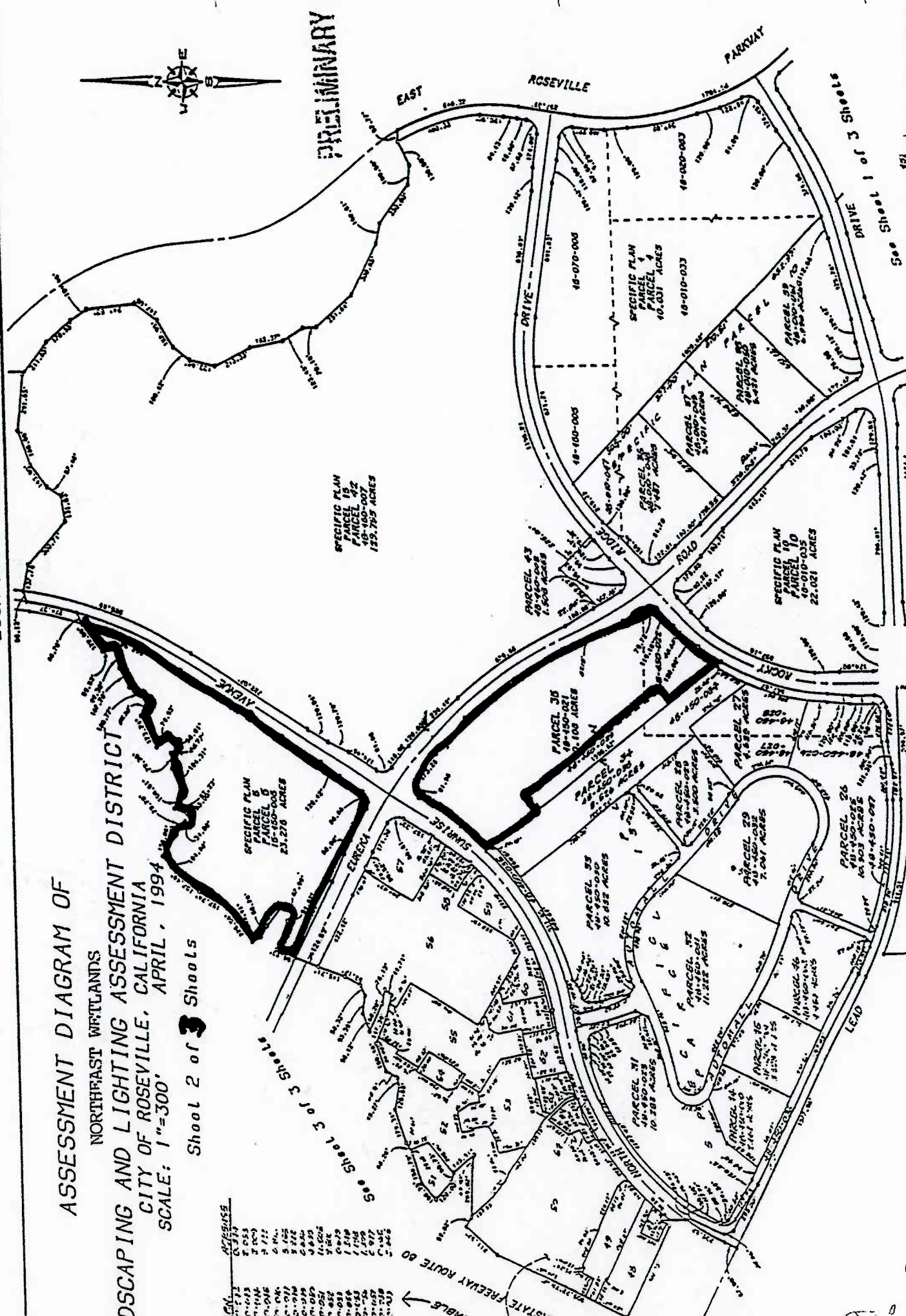
NORTHEAST WETLANDS

RESCAPING AND LIGHTING ASSESSMENT DISTRICT

CITY OF ROSEVILLE, CALIFORNIA

SCALE: 1"=300'

Sheet 2 of 3 Sheets



Parcel No.	Acreage
19-000-001	1.25
19-000-002	1.25
19-000-003	1.25
19-000-004	1.25
19-000-005	1.25
19-000-006	1.25
19-000-007	1.25
19-000-008	1.25
19-000-009	1.25
19-000-010	1.25
19-000-011	1.25
19-000-012	1.25
19-000-013	1.25
19-000-014	1.25
19-000-015	1.25
19-000-016	1.25
19-000-017	1.25
19-000-018	1.25
19-000-019	1.25
19-000-020	1.25
19-000-021	1.25
19-000-022	1.25
19-000-023	1.25
19-000-024	1.25
19-000-025	1.25
19-000-026	1.25
19-000-027	1.25
19-000-028	1.25
19-000-029	1.25
19-000-030	1.25
19-000-031	1.25
19-000-032	1.25
19-000-033	1.25
19-000-034	1.25
19-000-035	1.25
19-000-036	1.25
19-000-037	1.25
19-000-038	1.25
19-000-039	1.25
19-000-040	1.25
19-000-041	1.25
19-000-042	1.25
19-000-043	1.25
19-000-044	1.25
19-000-045	1.25
19-000-046	1.25
19-000-047	1.25
19-000-048	1.25
19-000-049	1.25
19-000-050	1.25
19-000-051	1.25
19-000-052	1.25
19-000-053	1.25
19-000-054	1.25
19-000-055	1.25
19-000-056	1.25
19-000-057	1.25
19-000-058	1.25
19-000-059	1.25
19-000-060	1.25
19-000-061	1.25
19-000-062	1.25
19-000-063	1.25
19-000-064	1.25
19-000-065	1.25
19-000-066	1.25
19-000-067	1.25
19-000-068	1.25
19-000-069	1.25
19-000-070	1.25
19-000-071	1.25
19-000-072	1.25
19-000-073	1.25
19-000-074	1.25
19-000-075	1.25
19-000-076	1.25
19-000-077	1.25
19-000-078	1.25
19-000-079	1.25
19-000-080	1.25
19-000-081	1.25
19-000-082	1.25
19-000-083	1.25
19-000-084	1.25
19-000-085	1.25
19-000-086	1.25
19-000-087	1.25
19-000-088	1.25
19-000-089	1.25
19-000-090	1.25
19-000-091	1.25
19-000-092	1.25
19-000-093	1.25
19-000-094	1.25
19-000-095	1.25
19-000-096	1.25
19-000-097	1.25
19-000-098	1.25
19-000-099	1.25
19-000-100	1.25

ASSESSMENT DIAGRAM OF
 NORTHEAST WETLANDS
 LANDSCAPING AND LIGHTING ASSESSMENT DISTRICT
 CITY OF ROSEVILLE, CALIFORNIA
 SCALE: 1"=300'

Sheet 1 of 3 Sheets

CLERK'S MAP FILING STATEMENT
 FILED IN THE OFFICE OF THE CITY CLERK OF THE CITY OF
 ROSEVILLE, STATE OF CALIFORNIA, THIS _____ DAY OF
 _____, 1999.

 CITY CLERK OF THE
 CITY OF ROSEVILLE

CLERK'S MAP STATEMENT
 I HEREBY STATE THAT THE MAP SHOWING PROPOSED
 LANDSCAPING AND LIGHTING ASSESSMENT DISTRICT, CITY OF ROSEVILLE,
 PLACER COUNTY, CALIFORNIA, WAS APPROVED BY THE CITY
 COUNCIL OF THE CITY OF ROSEVILLE AT A REGULAR MEETING
 THEREOF, HELD ON THE _____ DAY OF _____, 1999,
 BY ITS RESOLUTION NO. _____

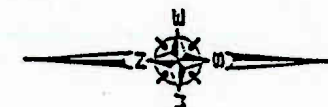
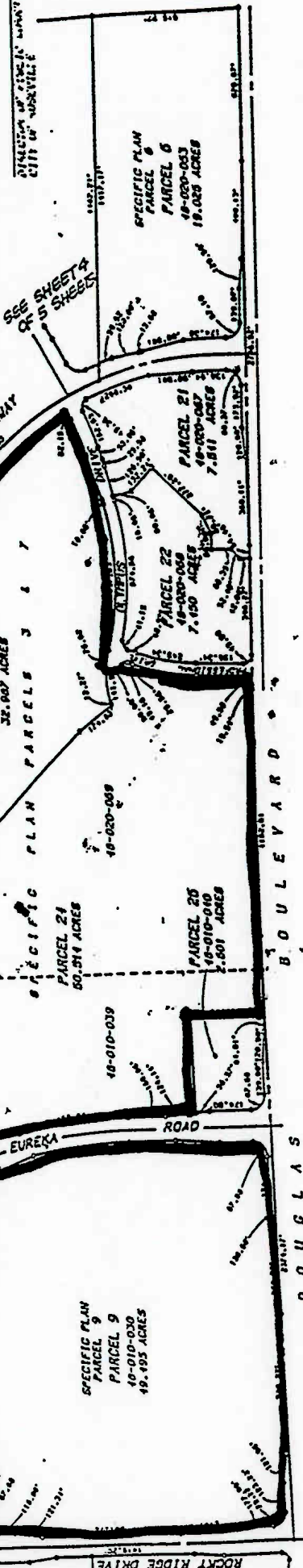
 CITY CLERK OF THE
 CITY OF ROSEVILLE,
 COUNTY OF PLACER

COUNTY RECORDER'S FILING STATEMENT
 FILED THIS _____ DAY OF _____, 1999, AT THE
 HOUR OF _____ O'CLOCK _____ IN THE OFFICE OF
 THE COUNTY RECORDER IN THE COUNTY OF PLACER, STATE OF
 CALIFORNIA.

FILED _____ BY: DEPUTY

 COUNTY RECORDER, COUNTY OF
 PLACER, CALIFORNIA

DIRECTOR OF PUBLIC WORKS FILING STATEMENT,
 FILED IN THE OFFICE OF THE DIRECTOR OF PUBLIC WORKS OF THE CITY
 OF ROSEVILLE, THIS _____ DAY OF _____, 1999.



PRELIMINARY

RES

